

**A Parish Profile
of
St. Paul's Episcopal Church
Montrose, PA
2021-2022**



St. Paul's Episcopal Church
276 Church Street
Montrose, Pennsylvania 18801
Phone 570-278-2954
Email: stpaulsmontrose@epix.net
Website: stpaulschurchmontrose.org

**St. Paul Window
Behind Altar**



Welcome!

Thank you for your interest in the position of Rector of St. Paul's in Montrose, Pennsylvania. Attached is our current Parish profile with detailed information about our church and our community. Our website should be reviewed for additional information.



As you review the profile, you will note that St. Paul's mixes its rich history with an energetic congregation that is responsive to the needs of our community. Founded in 1831, for 190 years, St. Paul's and its communicants have been fully integrated into the ebb and flow of the Montrose community. The church and its parishioners are a part of the fabric of Montrose and the parish, its establishment and growth have a rich history and are intertwined with that of the town and county.

As a parish that has been extremely blessed, we share with those in the community who are less fortunate and we offer our facility as a center for social and educational activities. St. Paul's is also our gathering place – a place where we seek a deeper understanding of our relationship with God, where we give thanks for his many blessings, and where we open our arms wide to welcome and share our faith with others.

We are a parish that partners with our rector, offering our respect, support, ideas, cooperation, and friendship. We seek an energetic leader, with a strong grounding in theology, who will guide our spiritual growth through inspiring sermons rooted in the ministry of Jesus Christ. We are seeking a caring rector who will share in our joys and reach out to us when our hearts are heavy. We seek a rector who is enthusiastic about our ministries and will work with us to grow the church and strengthen our community. To our new rector, we say, "Come and grow with us and together we will discover what plans God has for us and St. Paul's.

We look forward to meeting and talking to you!

ST. PAUL’S MONTROSE PARISH PROFILE TABLE OF CONTENTS

WELCOME	2
INDEX.....	3
A. MISSION STATEMENT.....	4
B. PARISH HISTORY AND PROPERTIES	5
C. ST. PAUL’S TODAY	9
D. BIBLE STUDY	12
E. MUSIC MINISTRY	12
F. LAY MINISTERS	12
G. COFFEE HOUR AND SOCIAL GATHERINGS	14
H. DAUGHTERS OF THE KING	14
I. COMMUNICATION.....	15
J. OUTREACH	16
K. STEWARDSHIP AND FINANCES	21
L. ADMINISTRATION	21
M. OUR DIOCESE.....	21
N. OUR COMMUNITY- SUSQUEHANNA COUNTY	23
O. OUR COMMUNITY - MONTROSE	26
P. NEARBY METROPOLITAN AREAS.....	30
MINISTRY DESCRIPTION AND QUALITIES	32

A. MISSION STATEMENT FOR ST. PAUL'S, MONTROSE



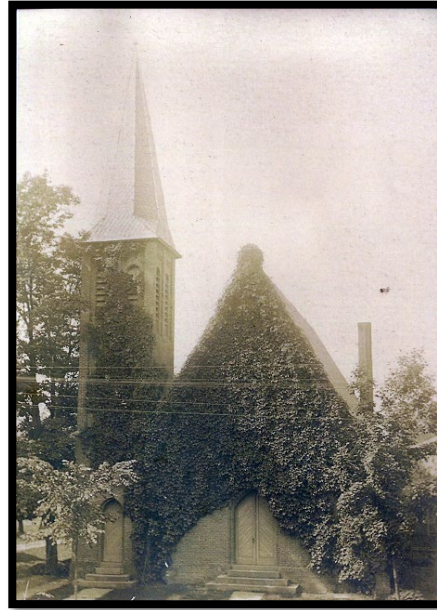
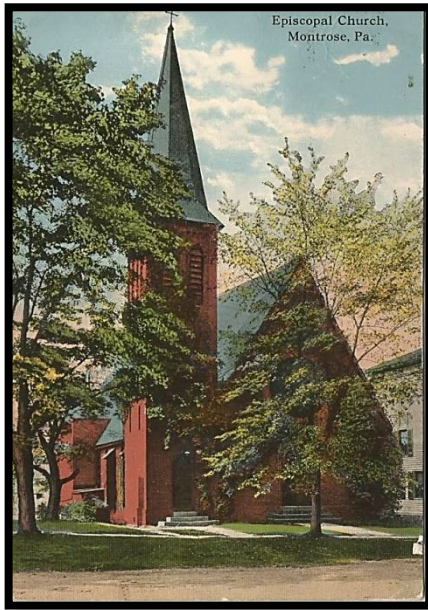
Although we worship in a beautiful building, we are well aware that the church is its people and we focus our energies outside its walls. We believe that God's gifts, large or small, are the building blocks of our faith and bring life, breath, and perspective to the church, its property, and its people. Much as the Apostles strived to spread the Good News of our Lord, we at St. Paul's seek to open hearts and minds to the mystery of God's plan through:

- **Worship, prayer, and faith:** Singing praise to the greatness of His love for us and His many gifts that provide the support for our ministry;
- **Education and guidance** for the emotional and spiritual growth of our parish, gaining a deeper understanding of our relationship with God and the mystery of His plan; and
- **Opening our doors and arms** to intimately share our faith and blessings with our neighbors, our communities, and the world, saying "Come and grow" with us and witness the miracles that occur.

St. Paul's is uniquely blessed with almost two centuries of Christian worship in the community and the world around us. God's love supports us in our individual missions and allows us to come together here in worship and faith.

Come and grow with us!

B. PARISH HISTORY AND PROPERTIES



St. Paul's 1908, 1910

St. Paul's today is comprised of three separate connected buildings. They are managed by the Property Committee. The church was built in 1857, the parish hall to the east was built in 1927, and the center structure which connects the two containing offices and bathrooms was originally built in 1874 but rebuilt in 1927. A Memorial Garden and parking lot are located to the east of the church.

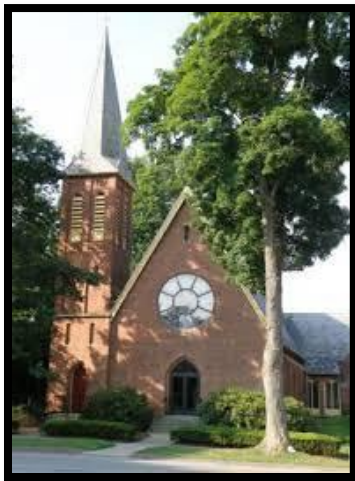
Many of the settlers of the Montrose village proper were from New England and were generally Baptists, Congregationalists or Universalists but there were Episcopalians among them. Pennsylvania Bishop William White stopped and preached at Montrose in 1826 on return from consecrating nearby St. Matthew's in what is now Stevensville. His visit set in motion the establishment of the Episcopal Church in Montrose.

St. Paul's was founded four years later largely through the efforts of two faithful and committed laypersons: Mr. & Mrs. Joshua W. Raynsford. The Raynsfords persuaded the Rev. Samuel Marks, who was the Rector of both St. Matthew's Church and St. Mark's, New Milford, to take on a third charge in Montrose. The dedication and devotion of these laypersons birthed St. Paul's Church and the parish was chartered and a first vestry organized.

The first church sanctuary was erected on Raynsford property on the corner of Chestnut and Cedar Streets, but by 1856, the congregation had outgrown the edifice, and the current building was begun. The parish “commissioned a church building that would inspire worship of God, and be a spiritual home for the growing community of faith.” This building, as it remains today, is a vivid reflection of the insights into the worship, ministry, outreach, and stewardship of the people of God who have faithfully used the sanctuary throughout the decades.

The Church

In 1857, the congregation moved up the block to a new and larger sanctuary that one reporter declared was “the handsomest church...out of the city of Philadelphia.” The building was designed by Richard Upjohn (1802-1878), the foremost American ecclesiastical architect of the mid-19th century. Originally from England, Upjohn was responsible for launching the popularity of the Gothic Revival style in the US.



Upjohn designed St. Paul's brick building in what is sometimes called the “country Gothic” style, with a tower and spire in the northeastern corner. It has a simple nave, without aisles, containing two ranges of open pews seating about 180 people. The woodwork is of local white oak. Suspended from low buttresses in the exposed ceiling woodwork are single globe chandeliers

The ceiling is lofty, broken into panels by beams and moldings; the sidewalls are plain and contain stained glass windows with richly colored borders. A brilliant rose window, which is visible from Church Street and is illuminated after dark, is over the main entrance. The chancel is semi-octagonal and is lighted by three Tiffany windows behind the altar. The center window portrays Jesus with his right hand raised to bestow a blessing. The window to the left is of the Archangel Raphael, and the one to the right is St. Paul, the patron of the parish. Restoration and cleaning of these three windows was completed in 2008.

The organ, located on the left wall of the chancel, is the second instrument in this building. Installed in 1912, it was dedicated to the memory of the Rev. Edward A. Warriner, who served the parish for nearly 40 years. The organ initially contained 864

“speaking” pipes and was water-powered. Electrified in 1927, it has occasionally been expanded and modified, with chimes and trumpets added in recent years. To emulate an English church, ivy was planted making us wonder how (by 1900 when early photographs were taken), parishioners got into church without hedge trimmers.

Located in the back of the sanctuary, St. Paul’s offers a resting place for the ashes of loved ones in its columbarium. It was made from the 1857 white-oak pews that originally were built for the church. The work was done by one of our parishioners, local craftsman, George Mann.

The Parish House



Since its construction over 90 years ago, this generous gift to St. Paul’s and the community has been used for hundreds of community events (some of which are listed in the section on Community Outreach).

Memorial Garden and Parking Lot

On the east side is St. Paul’s Memorial Garden, originally named the “Miss Mary Garden” dedicated to the memory of Mary Mitchell, a devoted member of St. Paul’s and an avid gardener. The garden was designed by a landscape architect and a former

member at St. Paul's. It is low maintenance due to the selection and pleasing arrangement of shrubs and trees. The garden was rededicated in 2016 as the Ellie McKeage Memorial Garden when the parking lot was built. The garden provides the perfect setting for an occasional church service, musical and social events.

St. Paul's has its own parking lot to the rear of the church and behind the Memorial Garden.

St. Matthew's Church, Stevensville



St Matthew's Church is in Stevensville, seventeen miles west of Montrose on Route 706 in what is now Bradford County. It was put under the oversight of St. Paul's in the early 1930s as the closest Episcopal Church.

In 1817, the parish was established and the church structure was built in 1824/1825. This building, which still stands, was built in consecrated in 1826, by Bishop William White, the first Bishop of Pennsylvania. Attending a service there is like going back in time.

The sanctuary has been refurbished several times over the years, but the "modernization" consisted of the conversion of the whale-oil lamps to kerosene. The original source of heat was a large pot-bellied stove in the rear of the church, which although no longer used, still stands. Recently, St. Matthew's received a gift of an electronic organ and also had the original pump organ repaired and made ready for services.

Thanks to the care of Robert Kimmel, a St. Paul's parishioner, the interior of the building has been kept in its original state, including a balcony with benches, which winds its way along the rear and sidewalls. The windows are mainly clear glass, although there are several memorial tinted or painted windows. There are many interesting

appointments and paintings in the church.

Due to changing demographics, St. Matthew's has become essentially inactive as a parish. St. Paul's has one of their services there each year in July or August. St. Matthew's has also hosted special events such as weddings and baptisms

C. ST. PAUL'S TODAY



Numbers at a Glance

- Number of Households 36
- Number of Members 47
- Average Attendance 20
- Number of Pledges 13
- Pledge Income \$25,820

St. Paul's During Covid

Like many churches, St. Paul's was affected by Covid. Services were suspended from Easter 2020 to May 2021. We emerged from Covid much weaker than we went in, losing our priest and about 25% of our parish to death (one from Covid), moving, divorce, switching to other denominations that were open, and those that just didn't return. Our minister contracted Covid on Easter 2020 and resigned. We were without clergy for 18 months.



During those 14 months when services were canceled by the Diocese, we continued live streaming Morning Prayer, which was led by rotating laity. The service required four individuals: a lector, reader, organist, and camera operator, letting our congregation watch on their own computers and participate in the service. While hymns were not included in the service, the organist played a prelude, organ meditation and postlude. Bulletins of the service were sent by email so participants could follow along. During the summer, weather permitting, we had services outside in our Memorial Garden next to the church. This venue was easy to use and proved very popular.



Worship Service



stpaulschurchmontrose.org

All services are also archived on YouTube.



D. BIBLE STUDY

The new clergy will be conducting the bible study twice a month on Thursdays.

E. MUSIC MINISTRY

Music is an integral and important element of the worship at St. Paul's. Hymns, anthems, and settings of the service music enhance and grace the worship service on Sundays and Holy Days.

St. Paul's has both an organ and an electronic piano for use in the services.

Due to the global COVID-19 pandemic, the formally robust music program went by the wayside and hopefully at some point will continue. The Chancel Choir of St. Paul's brought musical leadership to the congregation

F. LAY MINISTERS

An essential part of church life is the body of volunteers who are active in all areas of parish functions. In the absence of a regular Priest-in-Charge, this group has been able to keep the Sunday morning prayer service alive by volunteer parishioners leading the morning prayer. Additionally:

- **Altar Guild:** One of the most active, and specialized, lay ministries is the Altar Guild of St. Paul's. The Altar Guild members are responsible for preparing the Elements for Holy Communion for services on Sunday and whenever necessary during the week. They are responsible for the care and laundering of the Altar coverings, polishing the silver and brass, and replacing the candles. After services, altar flowers are delivered to members of the parish who are sick or shut-in.
- **Eucharistic Ministers:** Laypersons assist the clergy with the distribution of Holy Communion. These Eucharistic Ministers administer the wine to the communicants at all the services of the Holy Eucharist.
- **Lectors:** St. Paul's is blessed with a dedicated group of individuals who serve as lectors at the Sunday service. Following a continually rotating schedule that is drawn up six months at a time, they read the lessons and lead the congregation in reciting the portion of The Book of Psalms appointed for the day, as well as the intercessory Prayers of the People, which are participatory.

- **Greeters:** Members of St. Paul's greet, assist, and extend the hospitality of St. Paul's to all who visit and participate in the worship services.
- **Counters:** Counters are responsible for tallying and securing the monies from the weekly parish offerings.
- **Live Streaming:** St. Paul's Sunday worship services are live-streamed which is available on the church website and archived for future viewing on YouTube.
- **Pastoral Care:** The Pastoral Committee assists people in the congregation who need special attention, ministering to those who are unable to get to church, providing rides to healthcare givers, and supplying meals in an emergency. Some members of the committee are also trained to be Eucharistic visitors.
- **Sunshine Committee:** An important way of making the church community a family is keeping in touch through the sending of cards and baptismal and faith education, and making sure the news about special circumstances calling for sympathy or congratulations is communicated to the rest of the congregation, by phone and by word of mouth.



G. COFFEE HOUR AND SOCIAL GATHERINGS

Sunday Coffee Hour: This informal gathering after the service on Sunday morning brings parishioners and guests together under the hospitality of one of the parishioners who provide refreshments for the clergy, worshippers, and guests. We look forward to our time together each Sunday and no one rushes to leave.



The parish also gathers many times during the year around the table of friendship for Friday evening social night. The Shrove Tuesday Pancake Supper and July 4th Community Breakfast are big events and monthly dinners, brought in by vestry members, are on a rotating schedule at vestry meetings. The parish chapter of the Daughters of the King also hosts an annual Celtic Dinner on the Feast of St. Brigid of Kildare, the patron saint of the order for the parish and community.



Our Country Store is an annual event and part of Christmas in Montrose. Our participation is part social and part fundraiser. Each year a committee selects a worthy cause to receive proceeds from this and all other fundraising events.

H. DAUGHTERS OF THE KING

The Order of the Daughters of the King is a spiritual sisterhood of women who gather regularly for study and service activities. The members undertake a Rule of Life, incorporating the Rule of Prayer and the Rule of Service, and dedicate themselves to a life of prayer, service, and evangelism. We pray for people who ask for our prayers and those who we feel need God's mercy. Prayer shawls are made and given to those in need of comfort due to physical illness or personal crisis. The Daughters host a Celtic dinner for the parish and the community each year to celebrate their patron, Saint Brigid of Kildare the Irish Saint who had a generous heart and could never refuse the poor who came to her father's door. A retreat is held annually by our order inviting all women of faith.

I. COMMUNICATION

The goal of the Communication Team at St. Paul's is to assist in getting the news about our Church out to the members, friends, and community. Part of the responsibility of the communications committee is in communicating the activities of the parish as they relate to worship, education and evangelism, but a very large part is encouraging the activities to be reported. Individuals and groups tend to be more active, and more focused when they understand the framework within which they operate, and when they see the results of their efforts, in print.

Communication takes many forms at St. Paul's:

- A Thursday email is sent with the *Weekly Update* that provides all current events for the upcoming week. A "View from the Pew" article written by various volunteers from the parish is included. Numerous pictures accompany this update. These updates are archived for three months on the website. Copies are snail-mailed to those that don't have email capabilities.
- A weekly church bulletin with hymns is also sent via email on Thursdays.
- Monthly, St. Paul's church calendar is sent via email for the upcoming month.
- Posts are routinely put on St. Paul's Facebook page concerning activities.
- An electronic sign in front of the church provides inspirational messages and upcoming events to the community
- We have been very successful in getting articles about St. Paul's into the local papers; the Diocesan News Letter, and diocesan email;
- St. Paul's advertises extensively in local papers;
- St. Paul's website - stpaulschurchmontrose.org, is updated continually

- The addition of a wide-angle camera for Zoom meetings has recently been obtained and allowed the congregation to join a Diocesan Convocation meeting.
- There is a calling tree in place for church closings and emergency situations.
- Various brochures have been created and distributed communicating other various functions in which the church is involved.

J. OUTREACH

St. Paul's is more than a gathering place for the faithful. It is a true community center that supports a host of local community activities and groups, many of which meet at St. Paul's regularly. Community outreach is an important part of St. Paul's commitment and it is felt that church should be where the need is.

St. Paul's is generous in providing financial and/or program assistance to a number of local community organizations, notably:

- **Interfaith**, which services Susquehanna County by providing clothing, emergency assistance, fuel assistance, back to school shoes, and special programs at Christmas, Easter, and Thanksgiving. Interfaith is also the local service unit for the Salvation Army.
- **Trehab**, is a multi-county community action agency that services six rural counties in Northeastern Pennsylvania and has its administrative offices in Montrose. It assists low-income families in the form of food, employment services (including education and training programs), drug and alcohol programs, youth programs, homeownership, and programs to reduce home energy costs.

We regularly donate money to our local Women's Resource Center.

As part of our weekly offering, St. Paul's has a breadbasket for donations that benefit Montrose Mobile Food Pantry that takes place near the South Montrose Community Church. We pay for the bread that is distributed as part of the program that feeds 250 families per month. St. Paul's also sends volunteers to help at each distribution.

St. Paul's also is an active participant in providing support for the ALS foundation by taking donations and taking part in the annual Walk to Defeat ALS. This program helps to discover treatments and a cure for ALS, and to serve, advocate for, and empower people affected by ALS to live their lives to the fullest.

Other outreach programs operated by St. Paul's are:

- **Coats for the Community:** St. Paul's teams with the American Legion, Gardner-Warner Post # 154 for this project that is funded by St. Paul's with a donation from the Legion. Throughout the year, coats are purchased by St. Paul's on half-price Family Day (Wednesday) at the Salvation Army. Donations of coats are welcomed from individuals, from Interfaith, and drives at the local elementary schools. Men from the Legion transport coats and racks to each of the distribution sites. Free, warm winter coats are distributed starting in October at St. Paul's; Christ Church, Susquehanna; Christ Church, Forest City; St. Mark's, New Milford; and except for this pandemic year, at local elementary schools. We give away an average of 1500 coats per year.
- **Sleeping Bag Ministry:** With donated sheets and large scraps of fabric, a dedicated group makes sleeping bags for the homeless. We can finish one bag in a 2 ½ hour session and met twice monthly until our efforts were curtailed by the Coronavirus pandemic. We include a bag of toiletries in each bag. The finished sleeping bags are blessed during a Sunday service and distributed to homeless shelters in the Scranton area. No sewing is involved; if you can tie a knot, you can help us make sleeping bags.
- **Alcoholics Anonymous:** The Mustard Seed AA group has met for over 50 years at St. Paul's. Meetings are held on Mondays and Thursdays at 8 p.m. Entrance to the meeting is on Chestnut St. across from the HO Mart.
- **Soup/Salad Meal:** The need for help with food has increased significantly during the pandemic. This is a new ministry that started in December 2020. A free dinner of soup (salads in the summer), garden salad, applesauce, roll, and cookies are distributed to cars as take-out from the Chestnut St. entrance of the parish house.
- **Opioid Ministry:** Stop the Stigma is a grass-roots community group sponsored by St. Paul's. Our mission statement is to support those touched by addiction. This includes those with substance abuse disorder, those in recovery, those who care for them, and loved ones dealing with addiction in the family. We have sponsored three yearly events on International Overdose Awareness Day, August 31, on the village green in Montrose. These events included educational resource tables, inspirational speakers, names read and a tolling of a bell for those lost to addiction, and free hotdogs and hamburgers.

We have hosted Memory Luncheons before Christmas so people who are grieving lost loved ones can gather to remember their family members or friends with others who understand their loss. The funds raised from hosting a July 4th

breakfast sent a child to camp specifically targeted for children with addiction in the family. St. Paul's welcomes anyone seeking God as a source of life support.

- **Prayer Shawl Ministry** Shawls are knit or crocheted in patterns of three stitches or rows to represent the Father, Son, and Holy Spirit. As a need arises, a shawl is blessed during a Sunday service and sent forth with our love to someone who is ill, or hospitalized, or in need of comfort. The shawl is intended to wrap God's love and ours around each recipient.
- **Community use of Parish Hall:** In 1925, the donor of St. Paul's Parish House, Mr. Samuel Warriner, stipulated that the building should be used for the benefit of the entire community, as well as the parish. Since its construction almost 100 years ago, this generous gift to St. Paul's and the community has been used for hundreds of community events. A partial listing of the current groups that make use of St. Paul's facilities includes:
 - AA
 - Dairy Princess Pageant
 - Endless Mountain Theatre Company
 - The Susquehanna County Historical Society and Free Library Annual Meeting
 - TOPS (Take off Pounds Sensibly)
 - Montrose Adult School



OUTREACH





K. STEWARDSHIP AND FINANCES

The parishioners of St. Paul's are extremely generous with offerings and donations to our many local worthy causes. We have been lacking in an organized yearly stewardship program. The interest from our Diocesan Investment Trust is a blessing,

A review of the finances for 2020, which are audited annually, showed St. Paul's to be solvent and the books to be in good financial order at the end of the year. The Vestry prepared and approved a budget for 2021 projecting revenues for the various finances of the church.

A separate entity, The Friends of Historic St. Paul's, was organized to raise funds for the preservation of the historical grounds and buildings. The restoration of St. Paul's Tiffany windows was an undertaking of the Friends of Historic St. Paul's.

An effort has been made to invest time, money, and energy in maintenance to keep the physical structure of the church in good shape.

St. Matthew's

The financial health of St. Matthew's is satisfactory for normal operations such as electricity and grass cutting but inadequate for any extensive expenditures.

L. ADMINISTRATION

Much of the work of the parish is done by a dedicated group of volunteers through various committees. Other than the rector, we have the following paid positions:

- Part-time administrative assistant.
- Music director and organist.
- Live Stream coordinator
- Custodial service (hourly rate).
- Lawn and snow removal (contracted annually).

M. OUR DIOCESE

The Episcopal Diocese of Bethlehem
333 Wyandotte Street
Bethlehem, PA 18015
800-358-5655 (PA only)
www.diobeth.org

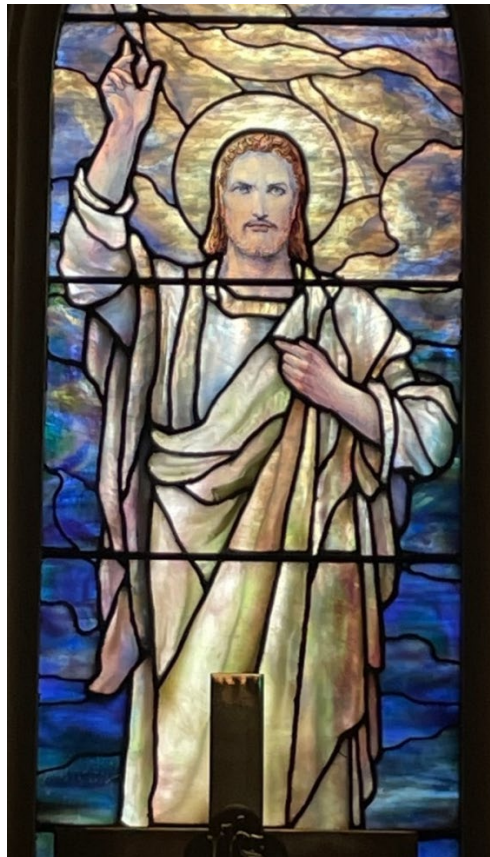
St. Paul's is part of the Northern Tier of parishes of the Diocese of Bethlehem and is in Convocation number 1. The Diocese of Bethlehem, founded more than 135 years ago, is the Episcopal Church in 14 counties of eastern and northeastern Pennsylvania (Berks, Bradford, Carbon, Lackawanna, Lebanon, Lehigh, Luzerne, Monroe, Northampton, Pike, Schuylkill, Susquehanna, Wayne, and Wyoming). There are about 60 congregations that include some 18,000 baptized members. Diocesan House is in Bethlehem.

The Diocese is presided over by:

- The Bishop, The Right Reverend Kevin Nichols
- Canon to the Ordinary for Mission
- Resources & CFO - Steven Baker
- Missioner for Finance & Admin - Paula Lapinski

St. Paul's is and has a close working relationship with St. Mark's in New Milford and Christ Church in Susquehanna.

Center Tiffany Window Behind Altar



N. OUR COMMUNITY -- SUSQUEHANNA COUNTY



Susquehanna County is located in Northeastern Pennsylvania, bounded to the West by Bradford County, to the East by Wayne County, to the South by Wyoming and Lackawanna Counties, and to the North by Broome and Tioga Counties in New York State. It was named for the Susquehanna River, which bisects it.

Susquehanna County is situated in a part of the Appalachian Mountains that is known as the "Endless Mountains." The scenery consists of rolling fields with beautiful woods and forested hillsides. In autumn, the trees put on a show of fluorescent reds and yellows. Winters can be rugged because of the high elevation – 1400 to 1700 feet above sea level but the roads are well plowed. It is not unusual for the schools to have five or six snow days off, which is a boon to local ski resorts. The challenges of winter are often offset by their beauty, and our summers are delightful with warm days and cool evenings.

The economy was initially primarily subsistence farming, but the development of the railroads and refrigeration cars led dairy farming to become a major industry. Dairy products, particularly butter, were sent to New York City and Philadelphia. While still an important part of Susquehanna's economy, most farmers have moved to raising beef.

We are essentially a rural county of small towns; no community has more than 3,000 citizens and most have far fewer. The total county population is slightly over 40,000. While formerly a center of railroading and light manufacturing, the major industries in the county today are agricultural and extractive. Bluestone quarries dot the landscape

and there is still an active foresting industry with Christmas tree farms and considerable demand for hardwoods such as cherry, maple, and walnut. Many county residents are employed in the urban centers of Binghamton to the north and Scranton to the south.

A major influence on county economic activity is the natural gas industry. Susquehanna County sits on a thick slab of gas-rich Marcellus shale, which is now an attractive resource due to rising natural gas prices and new technologies that make tapping this natural gas source economically feasible. Gas companies began offering increasing sums of money to country landowners for drilling rights in 2007 producing an influx of cash to what has traditionally been one of the poorer counties in the region.



Susquehanna County is attracting increasing numbers of seasonal visitors who enjoy the moderate summers, fall colors, and recreational opportunities. Stonewalls abound. Its numerous small lakes are ringed by summer cottages, and there are many active summer camps of all types. The Susquehanna River attracts boaters and hunting and fishing are also important, with the openings of deer, bear, turkey, and trout seasons being major events on the county calendar.

The cold winters and steep slopes attract ski enthusiasts to nearby ski resorts, most prominently Elk Mountain in the southeastern corner of the county. Salt Springs State Park, just north of Montrose, draws numbers of out-of-staters. An increasingly important aspect of county life, both in its contribution to the economy and the quality of life, is the growing artists' community. Dozens of artists' studios and workshops are spread throughout the county. Their work is highlighted in annual festivals like the Harvest of the Arts in September and the Artists Open House in October. There are also regular exhibits of local artists work at Slanted Art and the Pink Arrow.



Salt Springs State Park

- **Area:** 832 square miles
- **Population:** 40,589 (2018 (est.))
- **Climate:** Mean Temperatures: 44.4 degrees; January: 20.4 degrees; July: 67.3 degrees
- **Annual Precipitation Normals:** 42.14 inches.

More information on Susquehanna County is available at <http://www.susqco.com/>

O. OUR COMMUNITY -- MONTROSE



Montrose, located centrally in the county, was established by settlers mostly from Connecticut in the early 1800s. It became the county seat of Susquehanna County, was laid out in 1812, and incorporated as a borough in 1824. Its name is a combination of “mont,” the French word for “mountain” and Rose, for Dr. L R. Rose, a prominent citizen. Originally pronounced “Mont-Rose” it is now pronounced “Mon-Trose”.

The county remained rural and the town grew slowly. A business district with shops and law offices developed shaped like an upside-down “T”, with the courthouse and county office buildings at the top. Montrose derived its importance and growth from being the county seat and became a trading point for the agricultural community from the surrounding area. During the middle to late 1800s, the town became a summer vacation spot for people from New York and Philadelphia and many of the residents rented out rooms. Wealthy individuals also built large summerhouses.

By the 1960s, Montrose was a bedroom community with employment in Binghamton and Scranton/Wilkes Barre. Since that time, like many of the small towns along the New York and Pennsylvania border, the jobs that supported those commuters have disappeared and the population decreased. With the influx of the gas industry, a new library and a new hospital were built.

The land is elevated about 1,400 feet (427 meters) above sea level. The population was 1,617 at the 2010 U. S. census and the 2019 estimate is 1,477.

Local Festivals and Parades



Montrose's tree-lined streets, white houses with green shutters, and a village green reminiscent of the New Englanders who first settled the area, continue to attract New York, New Jersey, and Philadelphia residents looking for a place to spend their summers, raise their kids, or to retire. Montrose is also a growing destination for tourists attracted both by its charm and by the numerous festivals and celebrations that occur in and around the town. A shortlist of these events includes:

- The Wine and Chocolate Festival in May
- The Blueberry Festival in early August
- The Harford Fair in late August
- The Apple Festival in September
- The Artists Open House and the Fall Festival Antiques Tour on Columbus Day Weekend
- Christmas in Montrose in early December.

Local Health Care

The Endless Mountains Health System (Montrose Hospital) is a not-for-profit corporation committed to the operation and development of a health system that will provide optimum care within the scope of its abilities. The key elements in its process are quality, service, safety, cost, flexibility, and access.

The newly built hospital is a licensed 25-bed acute care facility with a short procedure unit, emergency services, and various ancillary services typically associated with a medical facility. It has an average of: 1,000 admissions annually; 42,200 office visits;

and 7,500 emergencies. Nearby hospitals include Barnes-Kasson, 17 miles away in Susquehanna; and Tyler Memorial Hospital, 20 miles to the south in Tunkhannock. Larger facilities are less than an hour away in the Binghamton, New York and Scranton/Wilkes-Barre metropolitan areas.



Montrose is fortunate to have excellent educational facilities locally or a short drive away. The Montrose Area School District (MASD) is the largest school district in the county, operating three schools:

- Two kindergartens through sixth-grade elementary schools – the Lathrop Street Elementary School in Montrose and the Choconut Valley Elementary School in Choconut, 13 miles from town; and
- The Junior-Senior High School for grades seven through twelve is located about one and one-half miles from the center of Montrose.

Adult education classes are offered through the Susquehanna County Vocational-Technical School in Elk Lake just fifteen minutes away.

Two recent additions to the local education scene are the Montrose Area Adult School, which offers vocational learning opportunities for adults; and a branch of Lackawanna College in New Milford specializing in vocational education courses. Luzerne County Community College offers college courses at several locations in the county. Many local students take courses at Keystone College in La Plume, 25 miles to the South. There are also excellent higher education facilities in the Scranton/Wilkes-Barre and Binghamton areas.

P. NEARBY METROPOLITAN AREAS

In addition to the small town and rural attractions of Montrose and Susquehanna's surrounding counties, there are many of the facilities more typical of a metropolitan area close by. New York City is only 3 hours away. Montrose lies between two cities: Binghamton, New York, 22 miles to the north; and Scranton/Wilkes-Barre, Pennsylvania, 46 miles to the south. Both of them have an extensive retailing, restaurant, and cultural offerings and are easily reached in less than an hour. More specifically, some of the services and amenities available in these areas are:

Airports

- Binghamton, Greater Binghamton Airport
- Wilkes Barre/Scranton, Wilkes Barre Scranton International Airport

Hospitals

- Binghamton, Our Lady of Lourdes Memorial Hospital, United Health Services Wilson Medical Center, and United Health Services Binghamton General Hospital
- Sayer, PA, Guthrie Robert Packer Hospital, Guthrie Health System
- Wilkes Barre/Scranton, Geisinger Community Medical Center, Veterans Administration Medical Center, Moses Taylor Hospital, Wilkes Barre General Hospital

Education

- Binghamton: Binghamton University (HAS BEEN the highest-ranked public university in the Northeast United States, and number 1 on Kiplinger's best values in education), Broome Community College.
- Scranton/Wilkes-Barre: College Misericordia, Commonwealth Medical College, Johnson College, Keystone College, Kings College, Lackawanna College, Luzerne County Community College, Marywood University, the University of Scranton, and Wilkes College. Penn State operates a satellite campus in the suburb of Dunmore.

Sports

- Binghamton: Baseball Eastern League's Binghamton Mets (AA affiliate of the New York Mets); Hockey, Binghamton Senators - (AHL affiliate of the Ottawa Senators).
- Scranton/Wilkes-Barre: The Scranton/Wilkes-Barre Yankees are the Class-AAA minor league baseball affiliate of the New York Yankees; Wilkes-Barre/Scranton Penguins (AHL farm team of the Pittsburgh Penguins); Wilkes-Barre/Scranton Pioneers (Arena football).

Performing Arts -- In addition to local music and acting companies, regional theaters and arenas host visiting Broadway shows, star performers, and special events.

- Binghamton: Binghamton Symphony Orchestra, Tri-Cities Opera, Cider Mill Playhouse, Broadway Theater League, Broome County Veterans Memorial Arena, and Anderson Center at Binghamton University.
- Scranton/Wilkes-Barre: Northeast Pennsylvania Philharmonic, Scranton Cultural Center, F.M. Kirby Center for the Performing Arts, Wachovia Arena, and Toyota Pavilion at Montage



Ministry Description for the Rector of St. Paul's Episcopal Church, Montrose, PA

What Qualities we are looking for in our Rector

We believe, in order to develop spiritually as individuals and as a congregation, that we need a priest who is warm and outgoing, energetic and enthusiastic for the Gospel. A good preacher and leader of worship who helps us understand what Jesus is telling us. We want someone who is actively present in the community and is St. Paul's face beyond our walls. We want our rector to possess leadership qualities and good communication skills with an ability to work with the Vestry and parishioners to instill a sense of church family to benefit the congregation and the local community at large.

The Rector is the spiritual leader of the parish and is responsible for the overall leadership of the congregation in the areas of worship, spirituality, pastoral care, and fellowship. The Rector is responsible, in mutual ministry with the Vestry, for supporting an effective ministry and Christian witness in the parish, the community, the Diocese of Bethlehem, and beyond.

The specific responsibilities of the Rector, as set out below, are partly reflective of past custom, but are open for revision following Vestry consultation and agreement and in light of future strategic planning.

The Rector is accountable to the Vestry of St. Paul's and to the Bishop of the Diocese of Bethlehem for his/her ministry. The Rector is accountable to the Bishop for certain disciplines and standards, as outlined in the Canons of the Diocese of Bethlehem and the National Church.

The Rector, Wardens, and committee heads prepare for and preside over the annual meeting for the Parish. Together they share the highlights from the past year and anticipate the upcoming needs and expectations. Salaried or non-salaried people in the parish are supervised by the Rector. Such salaried or non-salaried people in the parish are hired and dismissed by mutual agreement of the Rector and Vestry.

St. Paul's is committed to a partnership with the incoming Rector; discussions will focus on needs, strengths, challenges, and expectations. As so, the Vestry will work and support the Rector in the below-named areas.

Worship: The Rector works with the Vestry and other lay leaders to maintain a regular schedule of worship services such as Sunday Eucharist, Seasonal liturgies (Advent,

Christmas Eve, Ash Wednesday, Lent, Maundy Thursday, Good Friday, Easter, St. Matthews), and other appropriate Liturgies (Baptisms, weddings, house blessings, funerals, etc.).

Strategic Plan: The Priest will help to develop and carry out a strategic plan with vision to incorporate our core values and resources in order to establish a road map for our next five years. The plan will encourage and enhance our ministries within the community.

Music Program: Establish a lively music program that adds joy to our liturgy.

Scheduled Meetings: In addition to Vestry meetings, the Rector actively participates in Parish meetings as required, participates in the Bishop's clergy days, and any meetings of the local (Montrose area) Clergy, and in Vestry retreats and/or training.

Pastoral Care: The Rector will work together with the Congregation and Eucharistic Visitors to meet/visit with parishioners and others, taking sacraments to the sick and home-bound as appropriate.

Christian Education: The Rector, as spiritual leader of the parish, shall approve the design and leadership of all educational and spiritual programs, including Bible study programs, in cooperation with lay leadership.

Parish Administration: The Rector maintains appropriate records of the church; works in consultation with the Vestry and Wardens to envision, design, and implement new programs; and works with Vestry and other appropriate committees and leadership to ensure the existence of up-to-date policy and procedure manuals.

Leadership Development: In conjunction with lay leadership, the Rector identifies, trains and develops leaders and volunteers.

Finance and Property: The Rector administers the Rector's Discretionary Fund; and he/she works with the Vestry and appropriate committees to maintain the property and financial integrity of the parish.

Mission Outreach: With the Vestry and appropriate committees, he/she works to develop mission goals for outreach ministries, builds on current outreach ministries, and makes regular evaluations of outreach programs.

Renewal and Evangelism: He/she encourages creative thought within the Vestry and committees of the parish and works to develop goals and programs to make disciples.

Stewardship: With Vestry and appropriate committees, he/she works to expand the stewardship ministry of the parish.

Community and Ecumenical Relations: The Rector is responsible for carrying out an effective ministry and Christian witness in the community, as well as the continuation of established partnerships with area churches.

The Diocese: The Rector participates fully in the life of the Diocese, attending regular Bible Study with the Bishop, clergy meetings and retreats, and serves on committees and commissions as requested by the Bishop.